

FITFLEET-EXCAVATOR-500HR-CVA

PM Checklist

● 7 ● 0 ● 93 ● 21

Inspection Number	21531718	Customer No	2969824372
Serial Number	KEF10406	Customer Name	AUSTRALIAN HAMMER SUPPLIES HIRE PTY LTD
Make	CATERPILLAR	Customer Email	harry.pillow@westrac.co m.au
Model	345 GC	Work Order	SD44560
Equipment Family	Large Hydraulic Excavator	Completed On	5/03/2025 9:10:48 AM
Asset ID	AHSH104	Inspector	Harry Pillow
SMU	4459.42 Hours	PDF Generated On	4/03/2025
Location	AMR Rd, Spring Hill, New South Wales 2500, Australia	Coordinates	0, 0, 0
Technician	HP		

General Info & Comments

● General info/Comments ACTION

Comments: Horn button needs replacing

PSP for counterweight needs to be attended too



TASK SAFETY INSTRUCTIONS - Revision Number: 02 Date: 25th September 2023

- 1.1 Wear Correct PPE at all times PASS
- 1.2 All isolation and safe work procedures must be followed PASS
- 1.3 Identify task hazards and controls utilising hierarchy or controls model PASS

- | | | |
|---|--|------|
| ● | 1.4 Ensure a competent operator and spotter is utilised to move mobile equipment | PASS |
| ● | 1.5 Ensure all mobile equipment is fundamentally stable | PASS |
| ● | 1.6 Ensure three points of contact is maintained during access and egress | PASS |
| ● | 1.7 Ensure acceptable housekeeping standards are maintained at all times | PASS |

MACHINE GENERAL RUNNING CHECKS

2.1 Check all work lights, beacon & reverse alarm for operation

- | | | |
|---|---|------|
| ● | 2.2 Test all dash warning lights, gauges and audible alarms for correct operation | PASS |
|---|---|------|

Comments: All gauges are operational



- | | | |
|---|--|-----|
| ● | 2.3 Check idle timer for correct shut down operation | N/A |
|---|--|-----|

- | | | |
|---|---|------|
| ● | 2.4 Check operation of all three emergency stop buttons | PASS |
|---|---|------|

Comments: All E-Stops are operational

- | | | |
|---|-----------------------------|------|
| ● | 2.5 Check operation of horn | PASS |
|---|-----------------------------|------|

Comments: Horn button needs replacing



- **2.6 Check operation of reverse camera** PASS

Comments: Reverse cameras work



- **2.7 Check alternator charge voltage - ACTUAL_____V** PASS

Comments: 27.5v

- **2.8 Check operation of auto grease system by manually activating timer** N/A

- **2.9 Check fire system control panel for 'Normal'** N/A

- **2.10 Test hydraulic lock out function operation** PASS

- **2.11 Check window wiper and washer operation** PASS

Comments: Wipers and washers work

PM SAFETY GENERAL INSPECTION

- **3.1 Visually ensure all guards, shields and covers are in place and in good condition to ensure personal are protected from rotating parts** PASS

Comments: All guards and shields are in good condition



● **3.2 Check condition of machine identification signage**

FAIL

Comments: Some of the machine signage has ripped



● **3.3 Inspect ROPS/FOPS condition**

PASS

Comments: ROPS is in good condition



PM BRAKING SYSTEM

● **4.1 Test travel brakes – Ensure the machine comes to a stop when travel controls are released**

PASS

● **4.2 Test travel brakes – Ensure the brakes hold on a suitable slope**

PASS

PM FIRE SUPPRESSION SYSTEM

- 5.1 Ensure fire suppression bottle and components are securely mounted and in good condition N/A
- 5.2 Ensure fire suppression is correctly charged N/A
- 5.3 Inspect last charge date - ACTUAL _____ N/A
- 5.4 Check all fire extinguishers are securely mounted and in good condition PASS



- 5.5 Check all fire extinguishers are correctly charged PASS

Comments: lngtinguishers are correctly charged



- 5.6 Inspect last charge date - ACTUAL _____ FAIL

Comments: Extinguishers are 1 month out of inspection

PM ENGINE

- 6.1 Perform engine valve set N/A

- **6.2 Inspect air intake system hoses, pipes, clamps for signs of dirt ingress** PASS

Comments: No signs of dirt ingress in the intake system

- **6.3 Inspect engine for oil or fuel leaks** PASS

Comments: No visible fuel or oil leaks



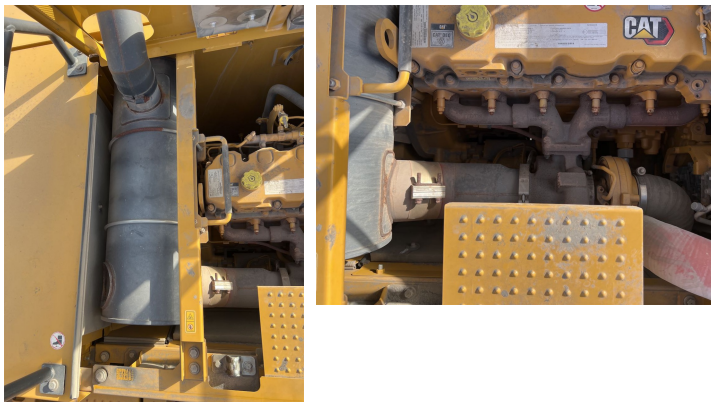
- **6.4 Inspect engine components for missing clamps** PASS

Comments: All components appear to have their clamps if required



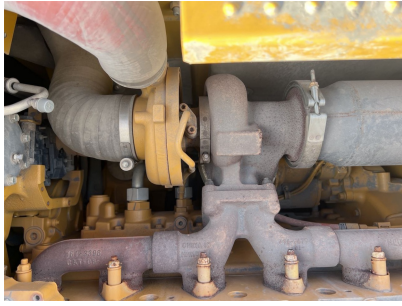
- **6.5 Inspect exhaust system for signs of leaks, loose bolts or missing clamps** PASS

Comments: Exhaust system appears in tact with no loose components



- **6.6 Inspect turbo for security and signs of leaks** PASS

Comments: Turbo is secure and does not appear to have any leaks



● **6.7 Inspect condition of exhaust lagging** N/A

● **6.8 Inspect engine mounts for condition and loose hardware** PASS

Comments: Engine is secure whilst running indicating mounts are in good condition

● **6.9 Inspect alternator mount condition and adjustment** PASS

Comments: Alternator has a fixed mount but appears to be in good condition



● **6.10 Inspect wiring condition and security** PASS

Comments: All wiring around engine appears to be good and not rubbing through

● **6.11 Clean engine breather** PASS

● **6.12 Replace outer air filter** PASS

● **6.13 Inspect & adjust engine belts** PASS

Comments: Belts are in good condition with a good amount of tension

PM ENGINE COOLING SYSTEM

● **7.1 Check coolant level** PASS

Comments: Coolant level is good

● **7.2 Check condition of radiator cap** PASS

Comments: Radiator cap is sealing and operating to spec

- **7.3 Check condition of radiator core and blow out** *N/A*

- **7.4 Check cooling system for signs of leaks** *PASS*

Comments: No visible leaks on the cooling sustern

- **7.5 Check hose and clamp condition** *PASS*

Comments: All hoses are in good condition with clamps still being tight



- **7.6 Inspect fan condition and operation** *PASS*

Comments: Couldn't get a good photo but fan is in good condition and cooling engine accordingly



- **7.7 Inspect radiator and fan guard condition** *PASS*

Comments: Fan shroud is secure and doesn't appear to have any cracks

PM SWING TRANSMISSION

- **8.1 Inspect swing transmission for signs of leaks** *PASS*

Comments: Swing xmsn appears to have been overfilled and that's why there is residue surrounding



- **8.2 Inspect swing transmission oil level** *PASS*

Comments: Swing oil level is spot on



PM HYDRAULIC SYSTEM

- **9.1 Check hydraulic oil level** *FAIL*

Comments: Hyd level low



- **9.2 Inspect hydraulic cylinders for leaks and security** *PASS*

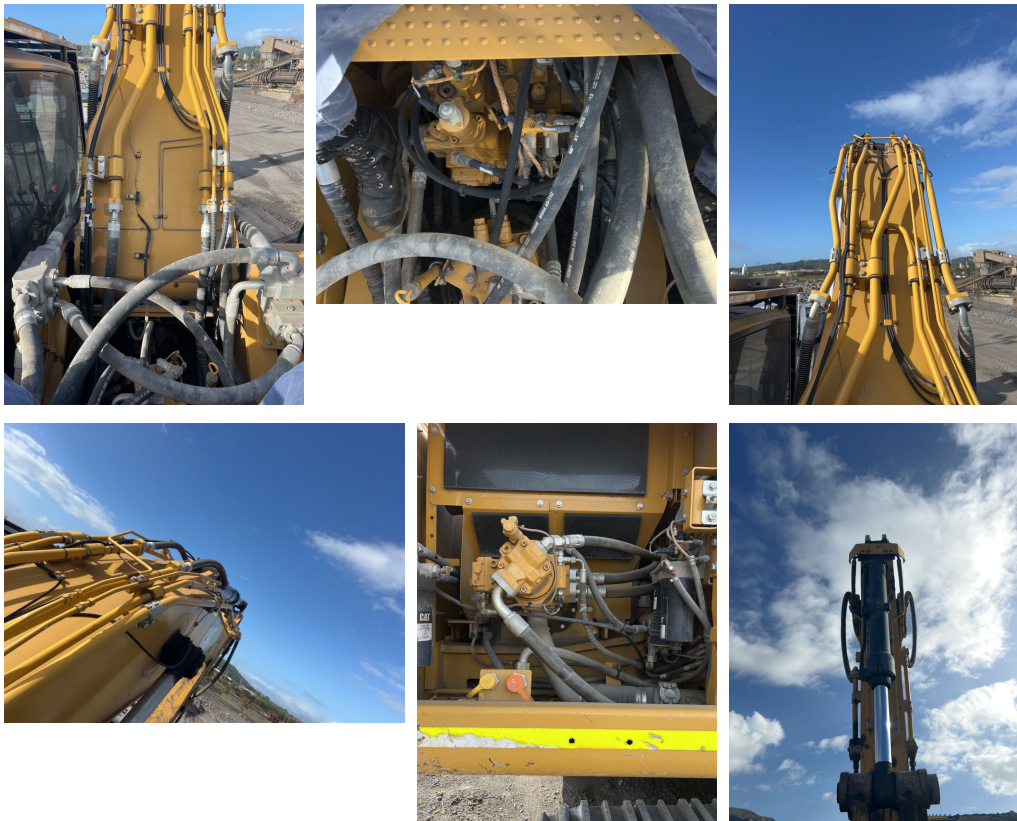
Comments: Cylinders and seals are in good condition



● 9.3 Inspect hydraulic hoses for leaks, damage, security

PASS

Comments: No signs of any leaking hoses



● 9.4 Inspect hydraulic pump condition, leaks, security

PASS

Comments: Hyd pump in good condition and no leaks present



-
- **9.5 Check Pilot Accumulator operation as per OEM Maintenance Procedure - Test Boom Down Functionality with engine off** PASS
-

PM FINAL DRIVES

-
- **10.1 Inspect LHS final drive mount condition for leaks and security** PASS

Comments: Final drive secure with no leaks



-
- **10.2 Inspect LHS oil level and mag plug condition** PASS

-
- **10.3 Inspect RHS final drive mount condition for leaks and security** PASS

Comments: Final drive secure with no leaks



● 10.4 Inspect RHS oil level and mag plug condition PASS

PM UNDERCARRIAGE

● 11.1 Inspect LHS track tension PASS

Comments: Correct tension



● 11.2 Inspect RHS track tension PASS

Comments: Correct tension



● 11.3 Inspect tracks for loose/missing bolts PASS

Comments: All fasteners appear to be tight

● 11.4 Inspect load and carrier rollers for signs of leaks PASS

Comments: Load carrier rollers appear to be in good condition

● 11.5 Inspect idlers for signs of leaks PASS

Comments: No signs of any leakage

● 11.6 Inspect sprocket segments condition PASS

Comments: Sprockets are in good condition refer to final images

● 11.7 Inspect track frame for cracks, lose or missing hardware PASS

Comments: No cracks noticed on either track frame

● 12.1 Check panels for damage and security

FAIL

Comments: All panels appear to be in good condition with no major dents/ damage

Couldn't photograph cracks without mirror but machine needs the PSP completed



● 12.2 Check access steps and walkway condition

PASS

Comments: Access steps are in good condition



● 12.3 Inspect boom condition – cracks, missing clamps, damaged pipes, excessive movement, lubrication

PASS

Comments: When boom was lowered there were no cracks that were noticed



● **12.4 Inspect stick condition – cracks, missing clamps, damaged pipes, excessive movement, lubrication**

PASS

Comments: When stick was lowered no cracks were noticed



● **12.5 Inspect quick hitch condition and operation**

PASS

Comments: Quick hitch operational



● **12.6 Inspect bucket condition – cracks, wear, damage, mounts**

PASS

Comments: Bucket in fair condition



● 12.7 Inspect GET condition and hardware FAIL

Comments: GET needs replacing



PM ELECTRICAL SYSTEM

● 13.1 Check battery condition PASS

● 13.2 Check battery terminal condition PASS

● 13.3 Check battery security PASS

● 13.4 Check battery box drain is clear PASS

● 13.5 Check wiring condition and security PASS

PM GREASE SYSTEM

● 14.1 Check all points for acceptable lubrication PASS

Comments: All joints took grease

● 14.2 Inspect grease system operation N/A

● 14.3 Check grease line condition PASS

Comments: Grease lines are in good condition

●	14.4 Refill grease tank	N/A
●	14.5 Lubricate bucket linkage	PASS
●	14.6 Lubricate blade linkage	N/A
●	14.7 Lubricate boom & stick linkage	PASS
●	14.8 Lubricate swing bearing	PASS

PM OPERATOR STATION

●	15.1 Check all doors for correct opening and closing adjustments and operation	FAIL
Comments: Radiator door jams up - was sprayed with lube and appears to have improved		



●	15.2 Inspect condition of door seals	PASS
Comments: Door seals are in good condition		



●	15.3 Check window glass and seal condition	PASS
Comments: Glass has no cracks and seals are all still in tact		



● **15.4 Check mirror condition and adjustments**

PASS

Comments: Mirror is well adjusted and free from any cracks



● **15.5 Fill window washer reservoir**

N/A

● **15.6 Inspect air con vents condition**

PASS

Comments: Vent condition is good



● **15.7 Inspect seat belt and mounting hardware**

PASS

● **15.8 Inspect seat condition, operation and mounting**

PASS

Comments: Seat condition is good with cover still in place



- | | | |
|---|-------------------------------|-----|
| ● | 15.9 Replace cabin A/C filter | N/A |
|---|-------------------------------|-----|

Comments: Not provided

OIL SAMPLING

- | | | |
|---|-------------------------|------|
| ● | 16.1 Engine | PASS |
| ● | 16.2 Hydraulic System | PASS |
| ● | 16.3 LHS Final Drive | PASS |
| ● | 16.4 RHS Final Drive | PASS |
| ● | 16.5 Swing Transmission | PASS |
| ● | 16.6 Coolant | PASS |

OIL AND FILTERS

- | | | |
|---|--|------|
| ● | 17.1 Replace engine oil | PASS |
| ● | 17.2 Replace engine oil filter | PASS |
| ● | 17.3 Replace primary fuel filter (water separator) element | N/A |
| ● | 17.4 Replace secondary fuel filter | N/A |

●	17.5 Replace fuel system third filter	N/A
●	17.6 Replace outer air filter	PASS
●	17.7 Replace cab filter	N/A
●	17.8 Replace A/C filter	N/A
●	17.9 Replace hydraulic case drain filter	N/A
●	17.10 Replace hydraulic pilot filter	N/A

PM POST SERVICE INSPECTION CHECKS

●	18.1 All inspections have been completed and rectified as required	PASS
●	18.2 All safety related defects have been repaired or reported	PASS
●	18.3 All defects have been noted and reported	PASS
●	18.4 All fluids are at correct level and drain plugs tight	PASS
●	18.5 All oil samples have visually been inspected and any notable signs of contamination have been reported	PASS
●	18.6 All replaced filters have been cut and inspected and photos added to CAT Inspect and reported to supervisor	PASS
●	18.7 Machine has been recommissioned and ready for operation	PASS
●	18.8 PM service notification marked off in Vision Link	COMPLETED

DEFECTS IDENTIFIED

●	19.1 DEFECTS IDENTIFIED	PASS
---	-------------------------	------